

# Waste Water Recycling Systems

## Domino WWR - Maxi

### Overview

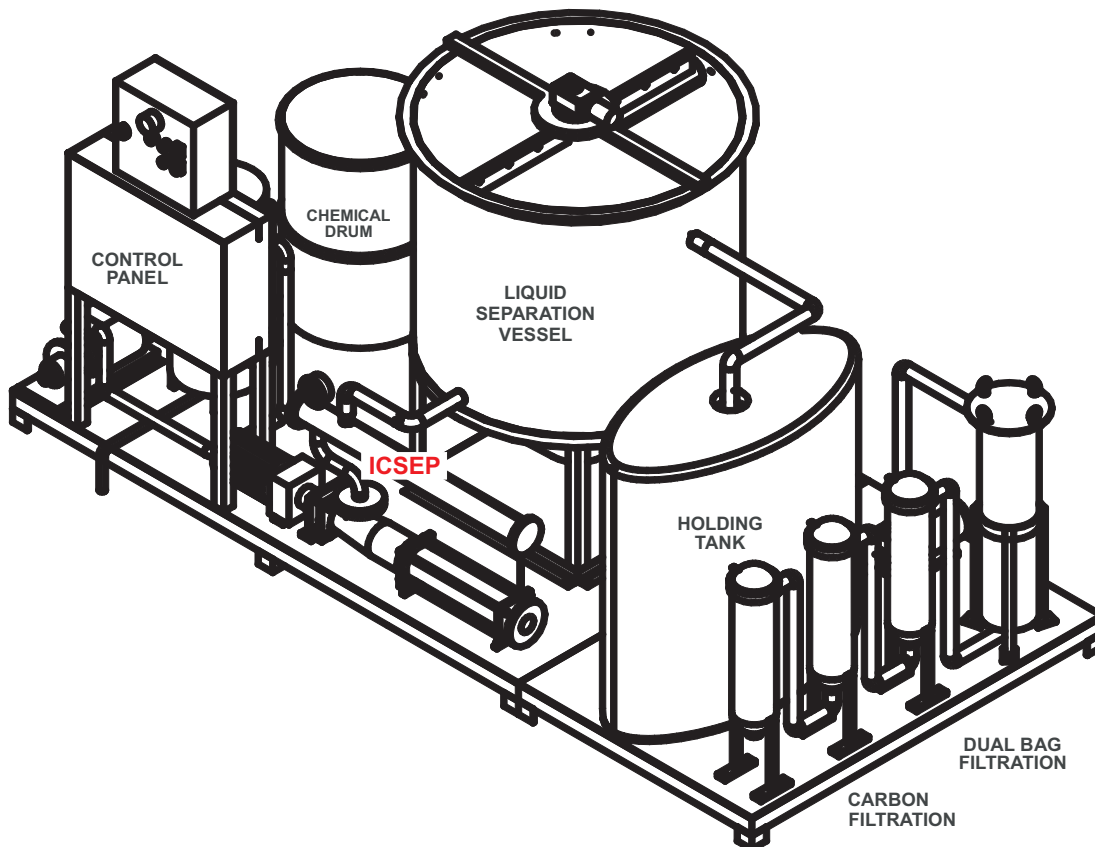
The **Domino WWR-Maxi** is our premium solution utilising four unique filtration systems to achieve a high quality source of odour and colour free recycled waste water. The Domino WWR- Maxi is ideal for use in high volume water treatment applications for many industries.

### Applications

- Automatic Car Wash Systems
- Self service car wash water reclaim.
- Truck & machinery wash water reclaim.
- Hose down areas in factories, workshops and maintenance centres.
- Power Stations, Mine Sites, Refineries and Petrochemical plants.
- Oil Tank Farms and Fuel Depots.

### Features

- Automatic PH and Chlorine control.
- Stainless steel vessel to minimise sludge pump out costs.
- Very low chemical requirements compared to competitor solutions. Save up to 80% on chemical costs.
- Easy maintenance, automated sludge removal and backwashing of screen filter.
- Scalable. Base unit can process up to 3000l/hour Easy upgrade to 6000, 9000 or 12000l/hr.



Everything Water PTY LTD

#### VICTORIA

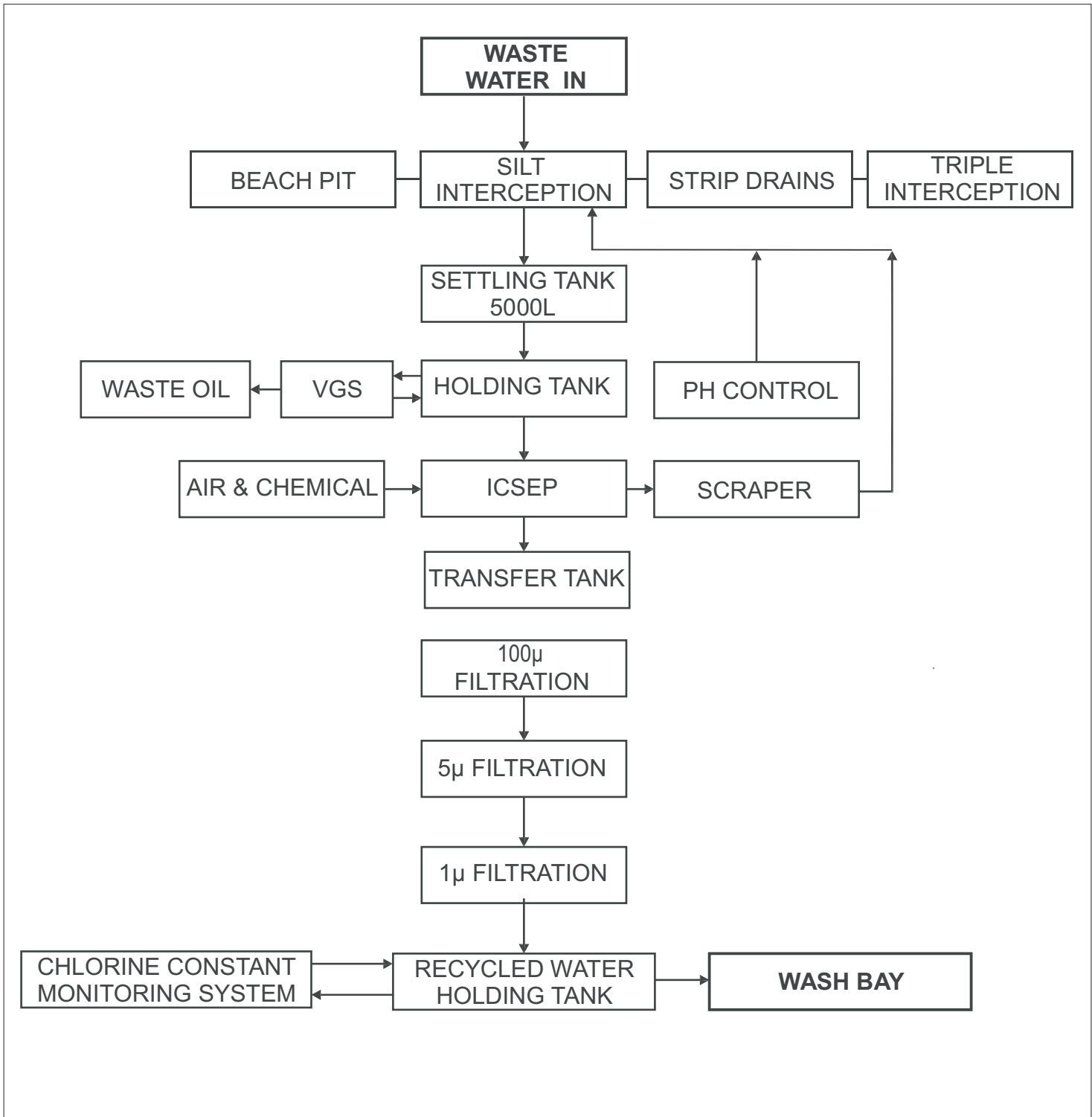
7 Ventnor Street, Balwyn North VIC 3104  
 + Phone: +61 3 9857 9845 Fax: +61 3 9857 9445  
 + Email: terryb@everythingwater.com

#### QUEENSLAND

Unit 3/32 Enterprise Street, Cleveland, QLD, 4163  
 + Phone: +61 (7) 3821 6922 Fax: +61 7 3286 5077  
 + Email: sales@everythingwater.com

## Domino WWR - Maxi

### Domino WWR - Maxi Process Diagram



Everything Water PTY LTD

#### VICTORIA

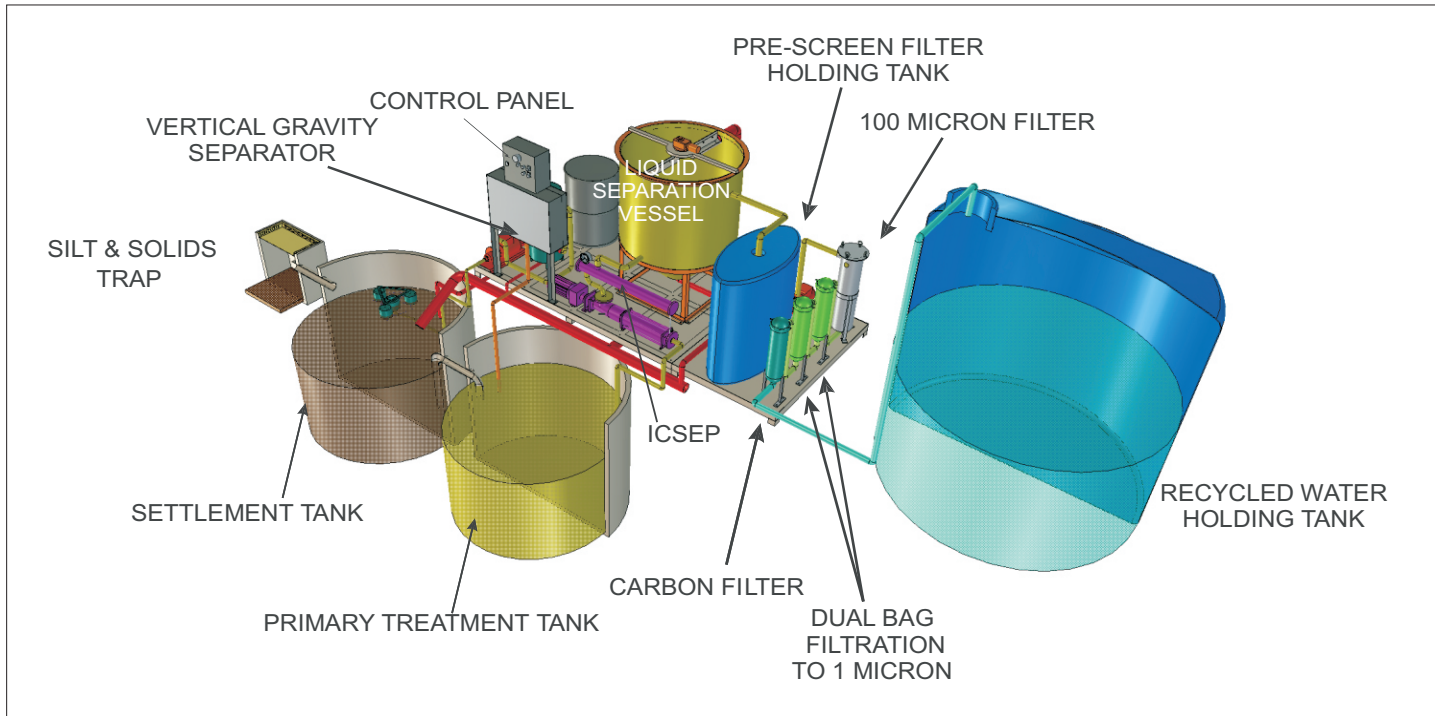
7 Ventnor Street, Balwyn North VIC 3104  
 + Phone: +61 3 9857 9845 Fax: +61 3 9857 9445  
 + Email: terryb@everythingwater.com

#### QUEENSLAND

Unit 3/32 Enterprise Street, Cleveland, QLD, 4163  
 + Phone: +61 (7) 3821 6922 Fax: +61 7 3286 5077  
 + Email: sales@everythingwater.com

## Domino WWR - Maxi

### Typical Domino WWR-Maxi Installation



### How it works

1. Waste water enters the system through the silt and solids trap.
2. As the solids trap fills water weirs over into the settlement tank.
3. The settlement tank fills until it also weirs into the primary treatment tank.
4. The water in the primary treatment tank is simultaneously treated in 2 ways:
  - a. Oily water is drawn from the surface of the tank by a floating skimmer which is then fed through a vertical gravity separator (VGS) before returning to the primary treatment tank. Oils and floating solids are captured in the VGS for later disposal.
  - b. Cleaner water is simultaneously drawn from the middle of the tank into the ICSEP where a flocculent is added and the induced cyclonic air infusion process is commenced before transfer of the water into the liquid separation vessel (LSV)
5. The surface of the water in the LSV is "scraped" to remove suspended solids and oils displaced by the ICSEP. Clean water is drawn off into the pre-screen filtration holding tank.
6. Water from the pre filtration holding tank is pumped through a 100 $\mu$  filter & two bag filters removing contaminants down to 1 micron. Treated water is stored in the pre-carbon holding tank.
7. PH is analysed and dosed automatically.
8. Clean water ready for use is stored in the recycled water holding tank.
9. Water in the recycled water tank is monitored and dosed with chlorine to maintain water quality and ensure OHS requirements are met.

### Everything Water PTY LTD

#### VICTORIA

7 Ventnor Street, Balwyn North VIC 3104  
 + Phone: +61 3 9857 9845 Fax: +61 3 9857 9445  
 + Email: terryb@everythingwater.com

#### QUEENSLAND

Unit 3/32 Enterprise Street, Cleveland, QLD, 4163  
 + Phone: +61 (7) 3821 6922 Fax: +61 7 3286 5077  
 + Email: sales@everythingwater.com